



MacDonald Farm Lands Within Sandbanks Provincial Park

Photography by John A. Brebner, PEC Archives



Image 12-1365, farm building (removed)

The most recent piece of land to be under study and reforestation is the historic MacDonald farm lands stretching from Lake Ontario in the south, and following the contours of County Road 12 to West Lake in the north.

There are a number of extant structures on that land.

The land was farmed continuously since the 1820s. Descendant of the original McDonald families, Keith MacDonald still farms the land today.

Click on any image for a larger version. Please respect our image copyright!



Image 12-1370, farm house

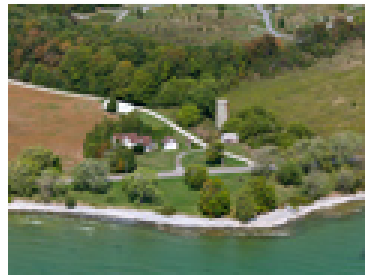


Image 12-3266, farm buildings



Image 15-2269, sugar shack



Image 15-7816, "Enterprise" anchor



Image 15-7822, anchor, Keith MacDonald

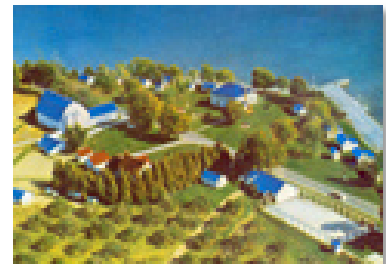


Image 12-3131



Image 14-0734



Image 16-4402

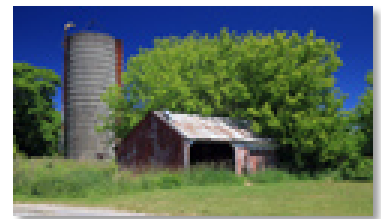


Image 16-4395



Image 13-6662 (c 1970?)

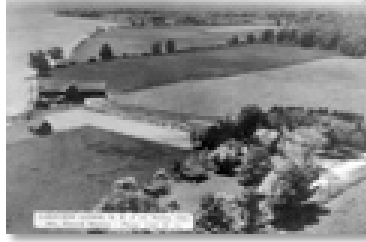


Image 13-6672



Image 13-6780a (aerial, c 1930);
National Air Photo Library



Image 16-0697a, original farmhouse

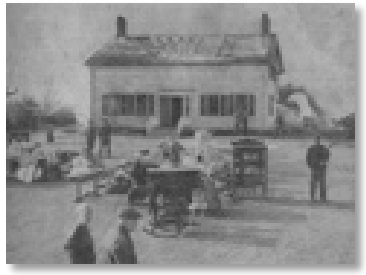


Image 16-0680, farmhouse after fire



Image 15-9028



Image 15-9031



Image 15-9035



Image 15-9055



Image 15-9084



Image 15-9095



Image 15-9096

© 2013 - 2017 Friends of Sandbanks Park. Any commercial re-use of these image without our permission is prohibited by law.

Do you want your photograph removed from our site? [Please let us know...](#) quoting the image identifier number.