



The Richardson Planting Archive 1922 (Part Two)

courtesy [Prince Edward County Archives](#), 2012



Image 12-1953

Once naturalist Arthur Herbert Richardson was tasked with slowing the advancing sand-dunes in 1922, he took a series of images showing the various plantings, and fences that were established at that date.

Many of these images show a mysterious figure ("Where's Waldo!") standing in the sands. Was that Arthur Richardson?

Click on any image for a larger version.



Image 12-1954



Image 12-1955



Image 12-1956



Image 12-1957

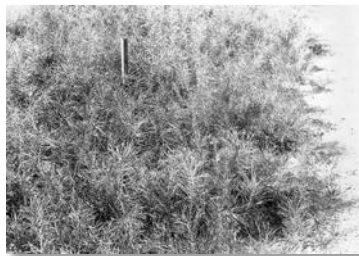


Image 12-1958



Image 12-1959



Image 12-1960



Image 12-1961



Image 12-1962

Photographs courtesy of the [Prince Edward County Archives in Wellington](#)



Image 12-1963



Image 12-1964



Image 12-1965



Image 12-1966



Image 12-1967



Image 12-1968



Image 12-1969



Image 12-1970



Image 12-1971



Image 12-1972



Image 12-1973



Image 12-1974

[View the first album in this series...](#)

[View more images like these in the third album in this series....](#)